



MRIP2 Double-Wall Quench Vent The Purposefully Engineered Double-Wall Quench Vent Solution



Providing Zero-Leak Safety and Prefabricated Excellence

Made of heavy-gauge steel, the factory-fabricated MRIP2 Double-Wall Quench Vent is designed for tight spaces. It includes 2" of insulation for additional safety and yields zero-leakage under positive or negative pressure without any additional sealant or on-site welding required. This ensures a consistent, efficient and dependable installation every time.

The First Prefabricated MRI Quench Vent Solution, Delivering:

GREATER SAFETY

CryoDuct is built to withstand the catastrophic event of a quench while providing long-lasting structural integrity and zero-leak safety. It pairs a unique bolt-together joint connection with a PTFE gasket engineered specifically for cryogenic temperatures.

COMPLETE COMPLIANCE

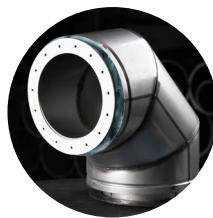
We've tapped into our deep application expertise to ensure CryoDuct meets all MRI manufacturer vent requirements. Each system, including our bellow section and termination components, is designed to provide the ultimate in safety and performance.

EXPERT CRAFTSMANSHIP

CryoDuct was created by a team of experienced engineers and venting professionals from The Schebler Company, the global leader in fabricating high-quality products, components and sub-assemblies.

The Advantages of Prefabricated Manufacturing

By overseeing manufacturing in our U.S. factory, we produce more consistent, stronger, safer and more durable products. With CryoDuct, you get:



CUSTOM ENGINEERING

We offer a variety of predesigned CryoDuct products but can also make custom components to fit your specific needs. Each is built to perform in the most challenging environments.

SUPERIOR DESIGN

CryoDuct uses heavy-gauge material for extra durability and longevity. Our unique, patent-pending design ensures zero-leak performance and the ultimate in patient and provider safety.

STEADFAST SUPPORT

CryoDuct is backed by elite U.S. engineering services and exceptional technical support. We check and re-check all required specifications and incorporate the resources necessary to meet and exceed your expectations.

PREFABRICATED QUALITY

Prefabricated systems are more reliable and more affordable than field-fabricated ones. We closely monitor the manufacturing of every system produced in our U.S. factory. Our complete and expert control allows us to build stronger, more reliable and more durable products.

Designed by the industry's most respected manufacturer of reliable prefabricated exhaust systems, CryoDuct provides reliability, durability and consistency that no other MRI quench vent design can match.

**VISIT OUR WEBSITE
TO LEARN MORE.**
CRYODUCT.COM

